



PATENT-PENDING

## Vac-U-Seal Poly 2” Self-Priming Pumps

PSP-3240

Poly-Centrifugal Pumps that are efficient, versatile, and built to last.



- 200 GPM Max Flow
- 45 PSI Max Pressure
- 112 GPM @ 25 PSI
- Required Horsepower: 5HP
- 2” Port Size
- Vac-U-Seal Impeller
- Close-coupled Shaft
- Fits 3/4” Diameter Shaft
- Double Wet Seal Assembly
- Chemical Resistant Materials
- 1” FPT pressure access & ½” FPT drain port

CDS-John Blue Company poly-pumps are not only lightweight and portable, but they provide incredible value to producers who need quality, affordable options for transporting liquids.

### PRODUCT FEATURES

- Fully-assembled from the factory—ready to be attached to power source immediately.
- Double wet seal assembly—pump can be run dry without causing seal failure, seal is antifreeze cooled. (Antifreeze is pre-filled from the factory.)
- Closed impeller technology—pump efficiency improves over time as the impeller wears.
- Polypropylene body, FKM and Viton® Seals, 316SS impeller shaft for excellent chemical resistance.
- Pump can be removed, or engine can be replaced without having to disassemble the pump.
- Handles the harshest liquid de-icing products on the market, which makes these poly pumps an excellent choice to keep surfaces free of ice and snow.

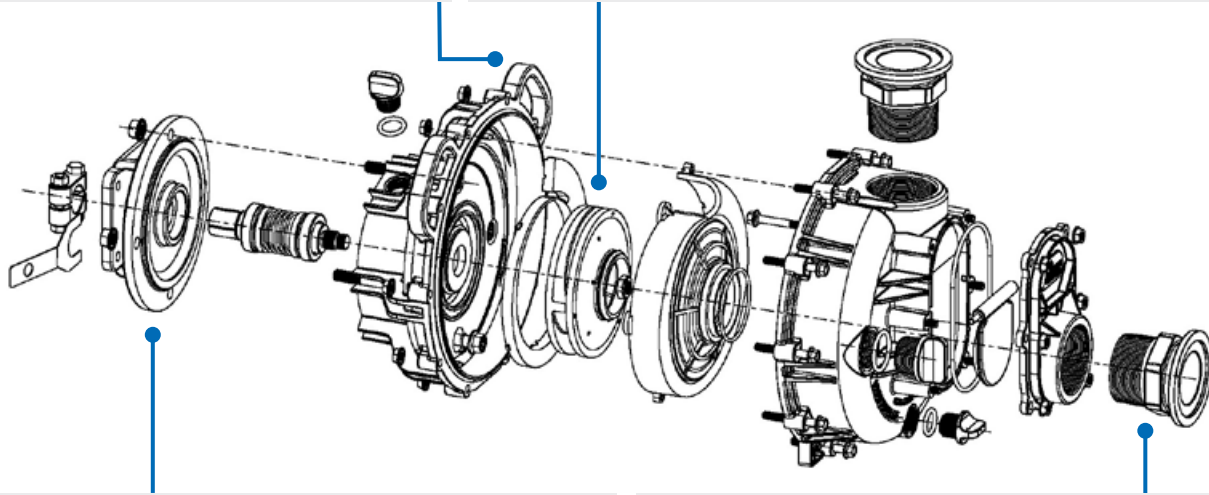
Several models and power source configurations to choose from: Single and Three Phase 5 HP Electric Motors, 5 & 6 HP Gasoline Engines; all models come standard with 2” FPT Ports with 220 Flange adapters optional.



Complete model list available online: [bit.ly/CDSJBC-PSP](https://bit.ly/CDSJBC-PSP)

Convenient carry handles allowing clearance for discharge elbow installation.

Vac-U-Seal impeller design creates a vacuum between the impeller and seal. Lack of pressure on the seal face minimizes seal wear resulting in longer seal life.



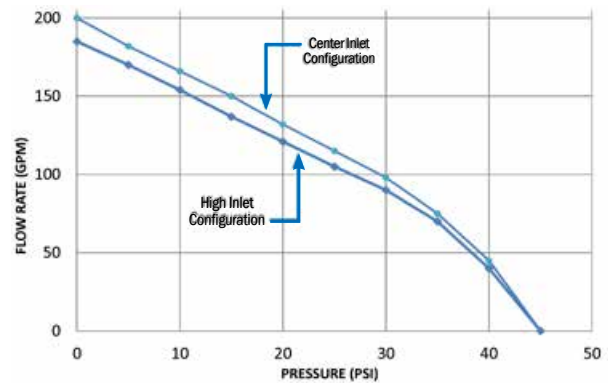
Close-coupled shaft with Cast iron engine mount for mount strength and heat dissipation from the motor.

Screw-in flange fittings are standard on -FLG models, and optional on all other models.

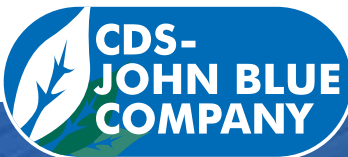


Shaft locating tool installed at the factory which prevents shaft displacement during installation on power source.

#### PUMP FLOW CURVES



2-in-1 Inlet Design (patent pending): Use center inlet for maximum flow or high inlet for drain back capability.



The Pump Company • Since 1886

“Guaranteed to Do the Job”

165 Electronics Blvd. SW, Huntsville, AL 35824 USA

Phone: 800-253-BLUE • Fax: 256-721-9091 • [www.cds-johnblue.com](http://www.cds-johnblue.com)

Publication# PSP3240-APR19-v1.2

© CDS-John Blue Company • Printed in the USA

